

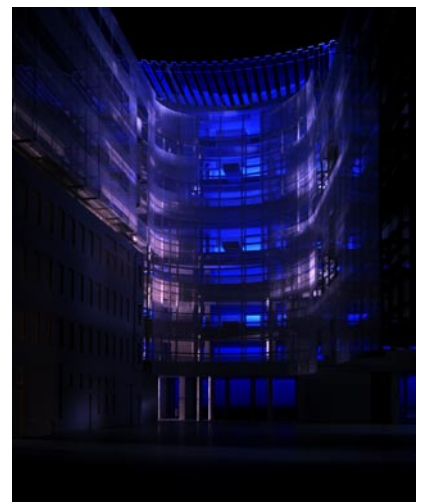
BBC Broadcasting House redevelopment, London W1

Our largest project to date is to repair and refurbish the Grade II* listed 1930's building and to extend it substantially to accommodate staff from BBC News, Radio, Music and the World Service.

We aim to create an extremely adaptable and flexible building that inspires creative people, promotes collaborative working and provides a sympathetic working environment that attracts high-calibre employees. We intend our building to

be a commercial asset for the BBC. Our design complements the iconic status of the original Broadcasting House with an emblematic work of architecture.

The extension will complement the existing building by the use of similar materials, Portland stone and glass that is fritted to resemble the stone colour. We are working with the BBC to contribute to this part of London by creating a major new public space outside the building that will open

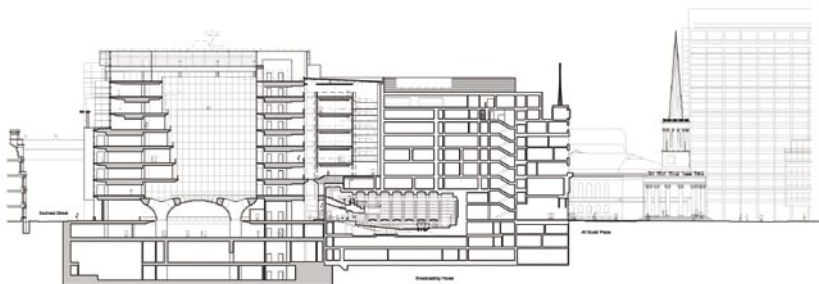
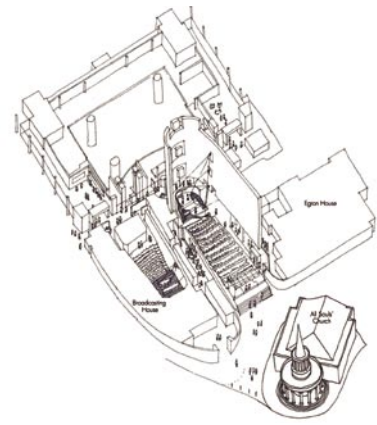


up the organisation's relationship with its audience. A co-ordinated nighttime lighting scheme has been designed for the curved facade of the extension and neighbouring All Souls' Church to create a unified composition terminating the north end of Regent Street.

The new build component of the design comprises of 80,000m² of production areas, studios and staff facilities. A 4000m² newsroom will be an exciting

and theatrical workspace at the heart of the extended building. The design maximises floor space and will create a building which has efficient net:gross floor area ratios and an excellent BREEAM rating.

Once the redevelopment is finished, Broadcasting House will contain one of the largest live news broadcast centres in the world.



- 1
 - 2
 - 3
- 1 Potential for Langham Place to become a new public space
 - 2 New newsroom created in the heart of the building
 - 3 North-South section showing newsroom and radio theatre

Client: BBC
 Completion: 2009
 Cost: £110m (Phase 1)
 £292m (Phase 2)