



Maggie's Centre, Cheltenham

Planning consent received January 2007

Maggie's Centre Cheltenham, designed by Sir Richard MacCormac (MJP Architects) has now received planning consent.

Situated within the grounds of Cheltenham hospital, near the Cancer Treatment Centre, and serving the 3-Counties Network (Gloucestershire, Herefordshire, South Worcestershire and parts of Powys), the new centre will provide a free drop-in service for cancer sufferers and their families, offering emotional and psychological support and information.

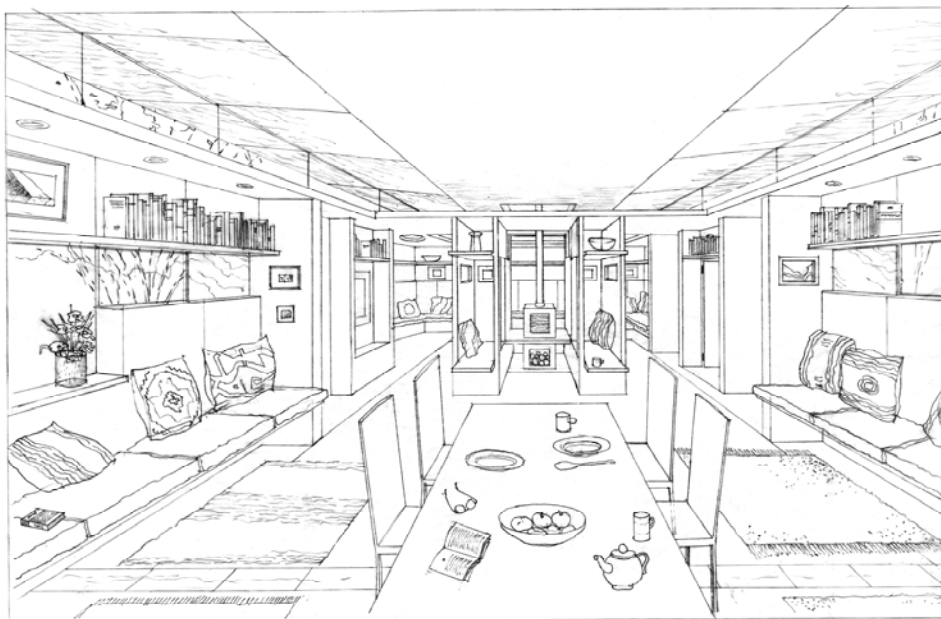
The new facility will be housed within a new single storey extension to the existing Victorian Grade II Listed Pool Keeper's Lodge which sits by the river Chelt. The extension, clad and lined in locally sourced hardwood and conceived as a series of highly detailed pieces of 'furniture', sit together under a large over sailing winged roof which itself is disengaged from the walls by a clerestory.

Two cylindrical refuges project from under the roof area and inhabit the garden spaces created to the north and south.

The new building will contain a kitchen and dining area – the main focus and heart of the building, private (counselling) spaces where access to structured emotional and psychological support will be provided individually or on a group basis, a large living room for group support, relaxation sessions or simply somewhere to sit and chat, a library and information area and also an office for administration and fundraising activities.

It has been designed with flexibility in mind; to allow for both an open atmosphere, and when necessary, privacy.

The new centre, set within its secluded private gardens, provides a sanctuary, away from the busy hospital, for people affected by cancer to use and relax in.



Interior of Maggie's Centre, Cheltenham