

## Priory Place, Coventry, Warwickshire

Forming part of our Coventry Phoenix Initiative, Priory Place is a new mixed use development of 84 flats and 3,000sqm of commercial space set around a new public square.

The accommodation is arranged in three blocks with the commercial units opening on to the new square and four storeys of one, two and three bedroom flats above.

To the north, overlooking Millennium Place, two of the blocks come together, to form the springing points for the Whittle Arch, a dramatic new structure that dominates Millennium Place and has since become a new landmark for Coventry.

The commercial space has been let to café and restaurant operators, and one unit houses the BBC as its flagship regional radio and TV centre. The new shop fronts are framed by panels of stone, and are set back from the face of the building behind a colonnade of circular white concrete columns.

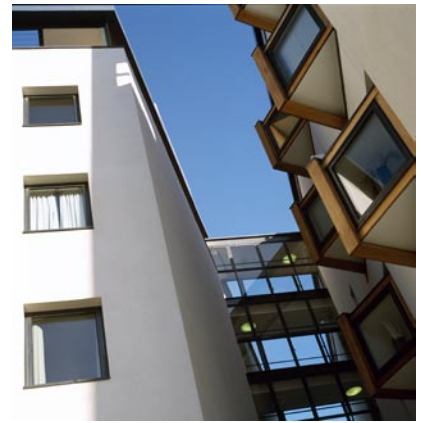
The first three storeys of residential accommodation above are defined by a white render wall which is cut away to



Priory Place looking towards the Whittle Arch at Millennium Place

reveal recessed or projecting balconies and bay windows clad in western red cedar. On the roof of the building, a recessed loggia contains a series of penthouses with fine views over the city.

These mixed uses have helped the public space to become a new and lively destination for Coventry.



- 1
- 2
- 3 4

- 1 Detail of housing
- 2 Priory Place from the North
- 3 Through Susannah Heron's water feature
- 4 Vibrant ground floor at night

**Client:** Complex Development Projects  
**Completed:** Jan 2004  
**Cost:** £10m  
**Contract Type:** Design and Build  
**Awards:** Shortlisted - Stirling Prize 2004