

Kendrew Quadrangle, St John's College, Oxford

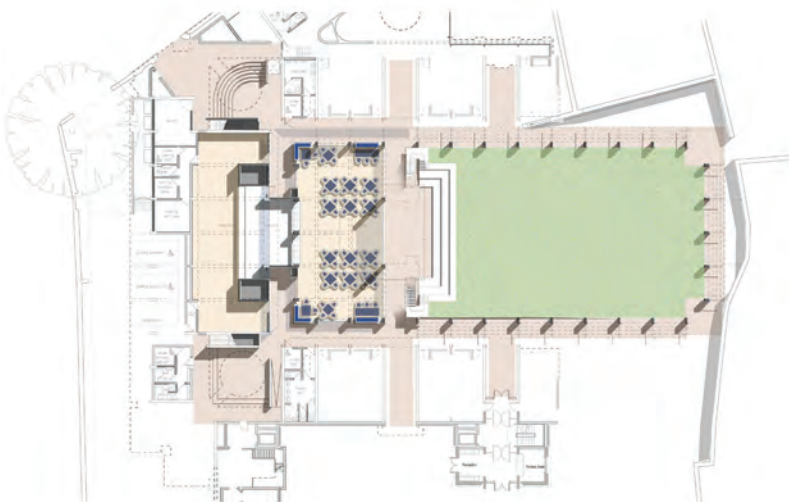
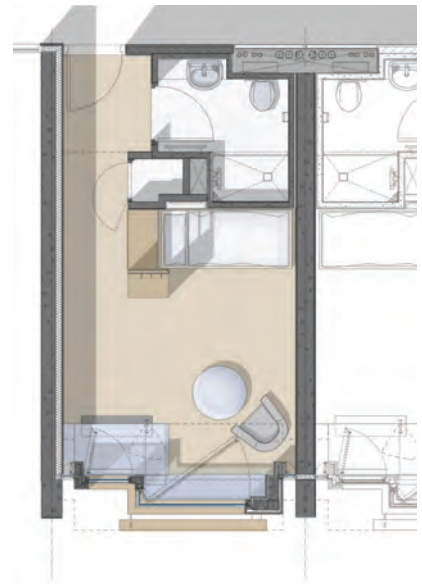
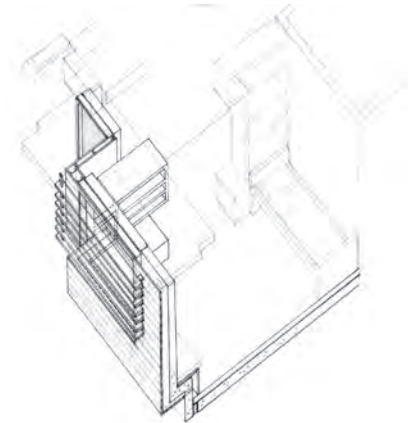
This provisional scheme for a new quadrangle at St John's College, Oxford has been developed with help from local planners and English Heritage. It consists of around 80 student rooms, a library, archive, cafe, communal spaces and new teaching rooms.

The designs centre on a garden which is part of a sequence of gardens stretching from the original site of the 16th century college to the new site.

Within the garden, a new formal quadrangle is proposed, similar in size and proportion to the college's famous Canterbury Quadrangle of 1636.

The materials of the garden parts of the building will include timber and glass on concrete cross walls and, closer to the main thoroughfare of St Giles, more stone is introduced.





- 1
- 2
- 3
- 4
- 5

- 1 Model photo.
- 2 Axonometric sketch of student bedroom
- 3 Rendered plan of student bedroom
- 4 View of the Cafe and Central Courtyard from the West
- 5 Rendered plan of ground floor and Central Courtyard

Client: St John's College, Oxford

Completion: 2010

Budget: £35m