

The Cable & Wireless Training and Conference Centre, Coventry

Cable & Wireless plc commissioned us to design a telecommunications training and conference centre on a 10-acre site overlooking Warwickshire's green belt. Together with the client, we established a very detailed brief including exemplary environmental objectives for the project.

Teaching rooms are located at the front of the site and are highly flexible, north-lit and naturally ventilated. An ocular court forms the social hub of the complex, linking residential, administration, catering

and teaching facilities. A separate leisure pavilion lies to the east. The wings are linked at first floor by a library and telecommunications exhibition space.

We also managed and co-ordinated the fit-out of the building.



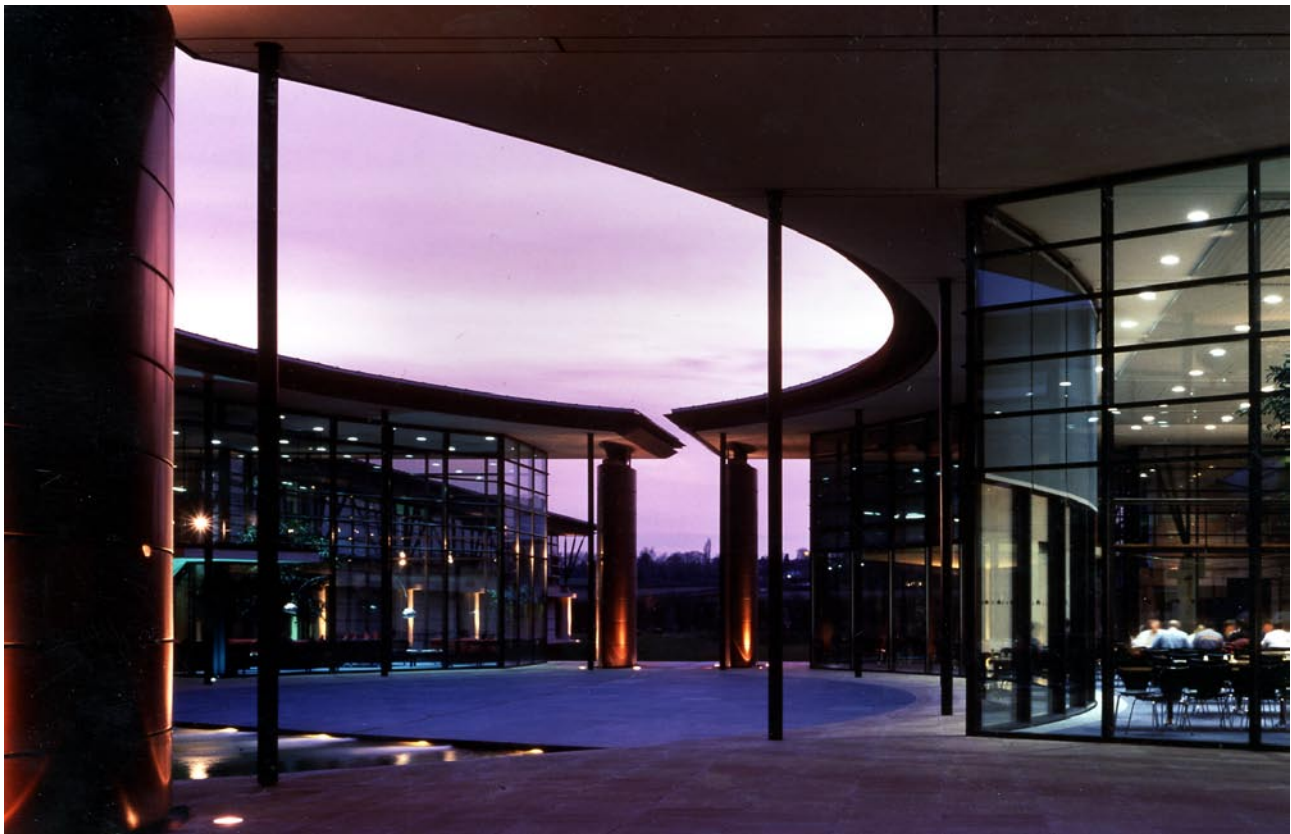
Wave form roofs to teaching areas form part of the environmental control strategy

'What makes the building satisfactory in the end is the way in which each move has been thought through at so many different levels.'

Peter Davey – Architectural Review

'The masterplan and innovative design approach has produced . . . one of the best buildings in Europe.'

Jonathan Glancey – Independent



- 1
- 2
- 3

- 1 A separate leisure pavilion with multi-purpose sports hall and swimming pool lies to the east
- 2 The ocular court at the heart of the campus
- 3 Leisure Centre with swimming pool

Client The Cable and Wireless plc

Completion 1993

Cost £24m